

PRESSURE REGULATORS



Series ITRV



ITRV valves are designed to control pressure in oil plant.

ITRV valves are available in two sizes with capacities up to 6000 l/h.

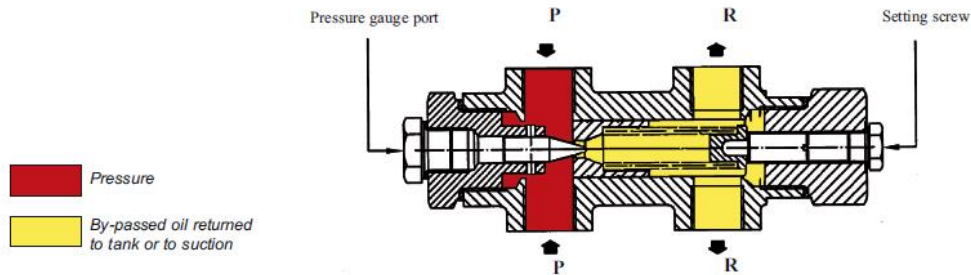
CHARACTERISTICS

Applications:

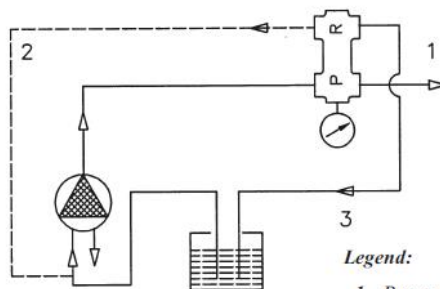
- Light and heavy oil.
- Pressure range 5-30 bar.
- Capacity up to 6000 l/h.

FUNCTION

ITRV valve works as follow: the oil in the supply side "P" is under pressure and the piston sets constant the pressure leading the oil through the hole in piston to return side "R". The system pressure can be adjusted by the screw.



INSTALLATION NOTES



Legend:

- 1 - Pump delivery to regulator or nozzle
2 - Oil return to suction side

TECHNICAL DATA

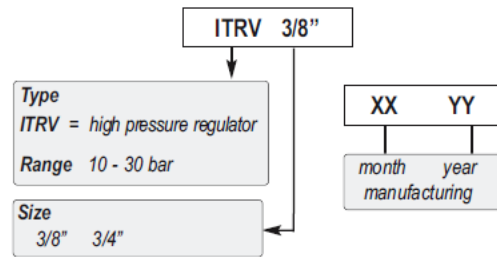
ITRV 3/8"

Viscosity range	2 - 800 cSt
Pressure range	5 - 30 bar
Weight	1,2 kg
Max oil temperature	250°C
Max flow rate	3000 l/h
Factory settings	min. pressure

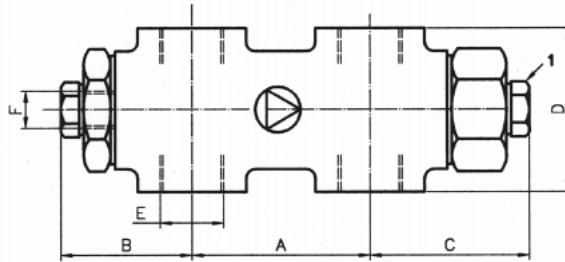
ITRV 3/4"

Viscosity range	2 - 800 cSt
Pressure range	5 - 30 bar
Weight	2,2 kg
Max oil temperature	250°C
Max flow rate	6000 l/h
Factory settings	min. pressure

IDENTIFICATION



DIMENSIONS



Pressure adjustment by screw placed under the plug 1.

SERIES	MAX FLOW RATE l/h	DIMENSIONS					
		A	B	C	D	E	F
ITRV 3/8"	3000	55	46	55	52	G 3/8	G 1/4
ITRV 3/4"	6000	63	50	60	73	G 3/4	G 1/4

PRESSURE - CAPACITY DIAGRAM

