

# PRESSURE REGULATORS



OIL BURNER PUMPS

## Series ITR



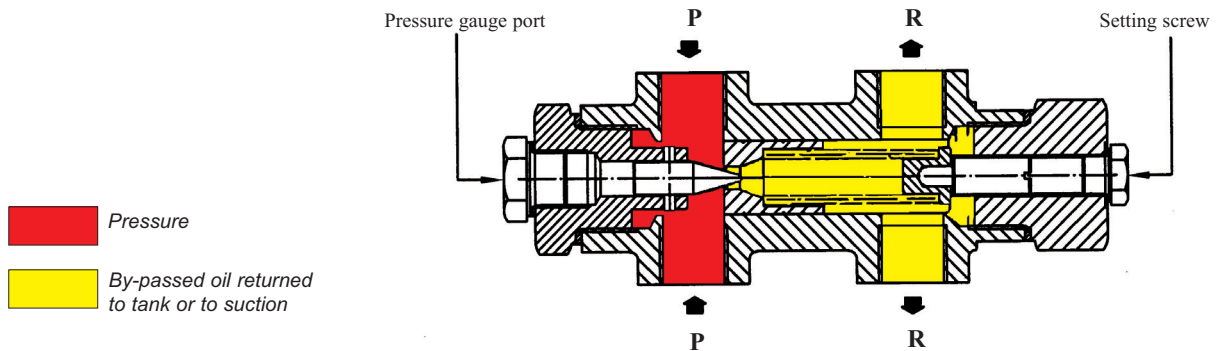
### CHARACTERISTICS

Applications:

- Low pressure.
- Fuels or lubricant not corrosive.
- Maximum fluid temperature 250°C.
- Pressure adjustment by screw 1-5 bar.
- Increased pressure on request.

### FUNCTION

ITR valve works as follow: the oil in the supply side "P" is under pressure and the piston sets constant the pressure leading the oil through the hole in piston to return side "R". The system pressure can be adjusted by the screw.

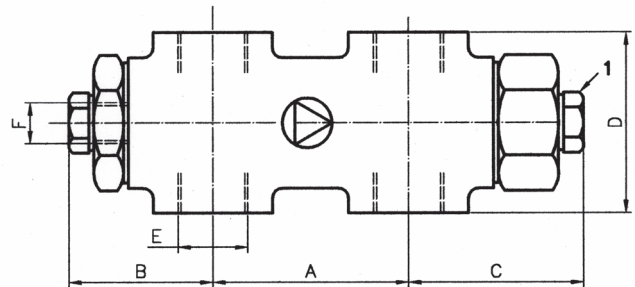


### TECHNICAL DATA

#### ITR

Viscosity range	2 - 800 cSt
Pressure range	1 - 5 bar
Weight	2 - 4 kg
Max. oil temperature	250°C
Max. flow rate	10000 l/h
Factory settings	min. pressure

### DIMENSIONS



Pressure adjustment by screw placed under the plug 1.

### IDENTIFICATION

ITR 3/8"

Type  
ITR = low pressure regulator

Range 1 - 5 bar

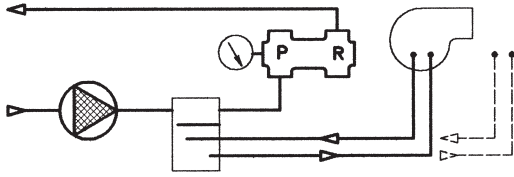
Size 3/8" 3/4"  
1" 1 1/4"

XX YY  
month year  
manufacturing

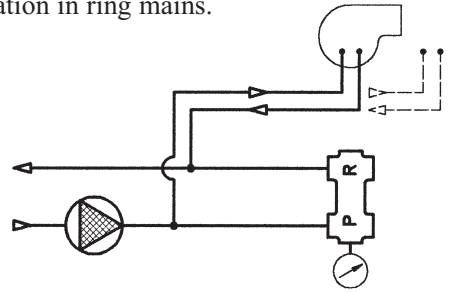
SERIES	CAPACITY l/h	DIMENSIONS					
		A	B	C	D	E	F
ITR 3/8"	600	55	46	55	52	G 3/8	G 1/4
ITR 3/4"	2.000	63	50	60	73	G 3/4	G 1/4
ITR 1"	6.000	80	48	58	86	G 1	G 1/4
ITR 1 1/4"	10.000	80	48	58	86	G 1 1/4	G 1/4

## INSTALLATION NOTES

For pressure limitation or for pressure regulation in ring mains.



Burners feeding with under pressure ring main and degassing unit with preheated oil recovery.

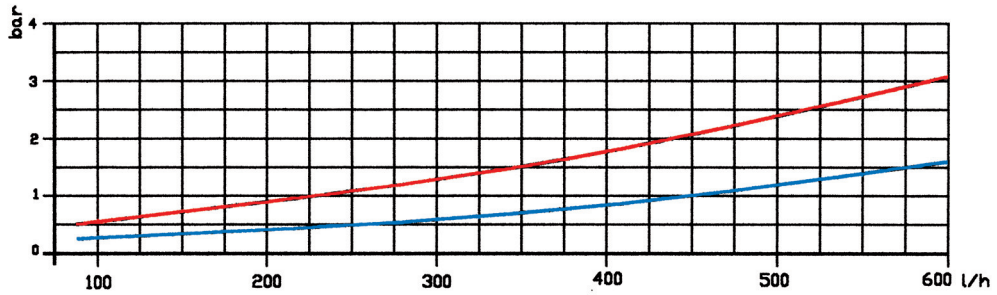


Feeding of burners with under pressure ring main.

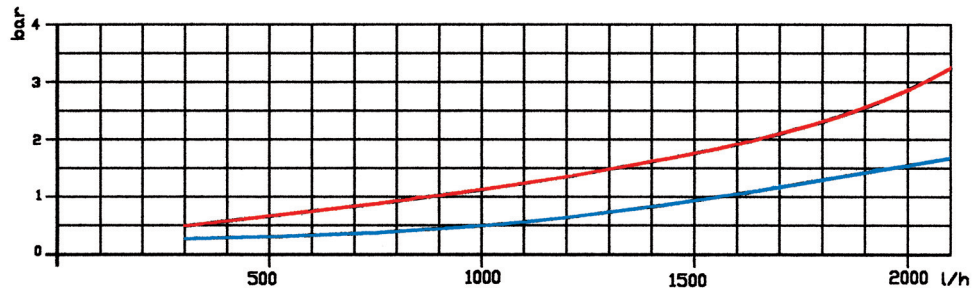
## FLOW CHARACTERISTICS

— 20°E 152 cSt  
— 1,5°E 6 cSt

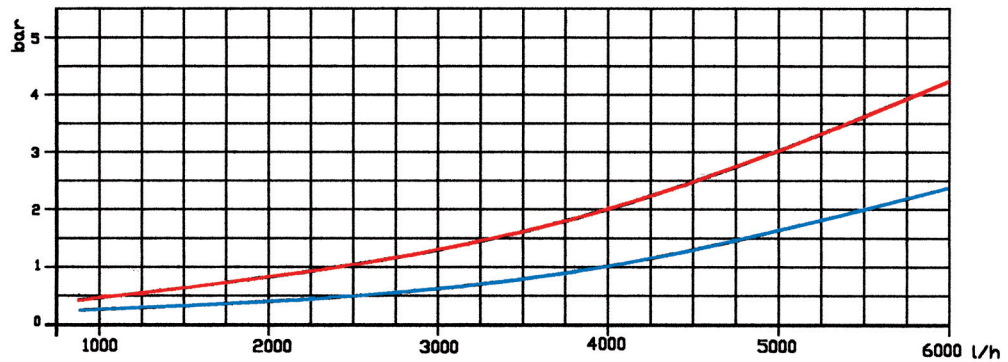
ITR 3/8"



ITR 3/4"



ITR 1"



ITR 1 1/4"

